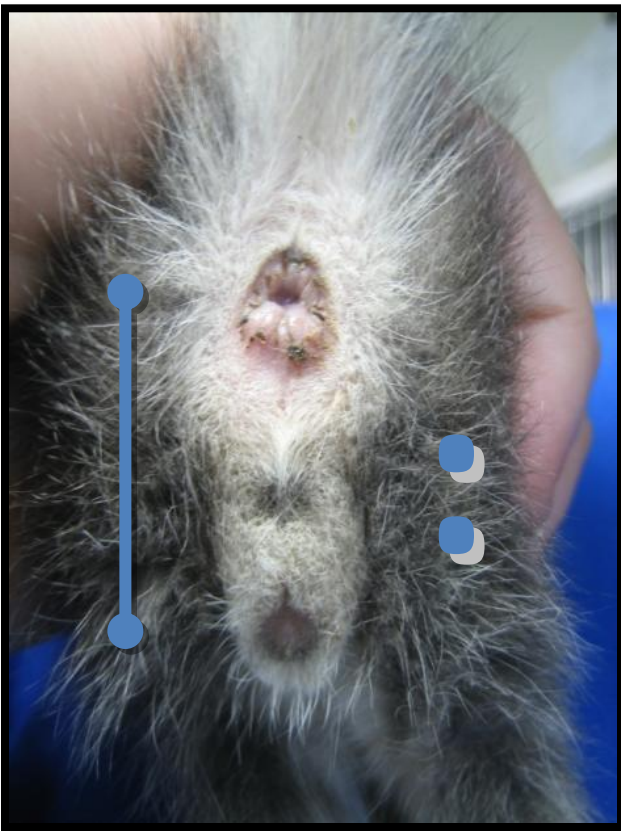


# Sex Determination in Kittens

It can be a challenge to determine the sex of a young kitten, but with a little practice and careful observation, it is a skill that anyone can learn. Assessing both the location and shape of the genital opening will provide the most useful information. When available, the differences become obvious when comparing a male and female side-by-side.

*To start, gently lift the kitten off the ground. Keep him or her right side up while supporting the belly with one hand. With the other hand, gently lift the tail straight up.*



**Male**



**Female**

## Location

In males, the distance between the anal and genital opening is longer than it is in females.

## Shape

The anal opening in both sexes is round in shape. In females, the genital opening is long and narrow; in males it is circular. When combined, the anal and genital openings in a female resemble a *semicolon*, while those in the male resemble a *colon*.